

*SunDinner*

Dining Table | Middle Leg

Restaurant | Café | Club Terrace | Rooftop Bar

> Stainless steel base plate

> flexibly combinable into larger arrangements

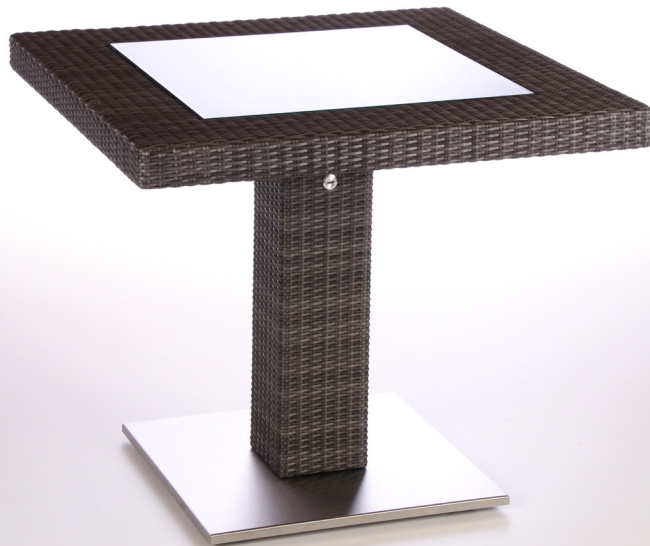
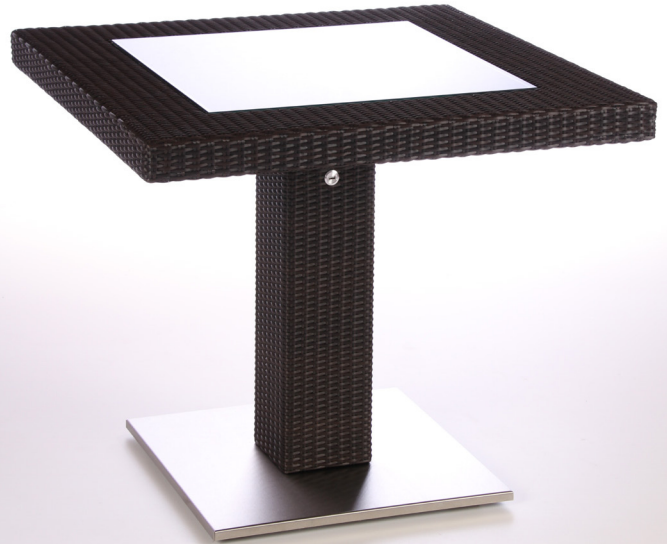
Dimensions: 76 x 90 x 90cm

Material: Synthetic Rattan

Color: DarkBrown Peel

Persons: 4

Properties: Photovoltaic Glass 600x600mm  
Solar Glass Power: 21 Wp  
2 USB Outlets (expandable)  
Bluetooth SmartConnect App  
Also available with CUCER LED light package  
for a stylish ambient lighting



*SunDinner*

Dining Table | Middle Leg

Restaurant | Café | Club Terrace | Rooftop Bar

> Stainless steel base plate

> flexibly combinable into larger arrangements

Dimensions: 76 x 90 x 90cm

Material: Synthetic Rattan

Color: SilverMetalic Peel

Persons: 4

Properties: Photovoltaic Glass 600x600mm  
Solar Glass Power: 21 Wp  
2 USB Outlets (expandable)  
Bluetooth SmartConnect App  
Also available with CUCER LED light package  
for a stylish ambient lighting

We are happy to assist you in case of any questions are left unanswered or further information is required for your unique application.

**Cucer GmbH**

Hauptstrasse 31  
56477 Waigandshain

**Contact us**

Tel.: +49 2664 993 9 698  
info@cucer.eu

*SunDinner*

Dining Table | Middle Leg

Restaurant | Café | Club Terrace | Rooftop Bar

> Stainless steel base plate

> flexibly combinable into larger arrangements

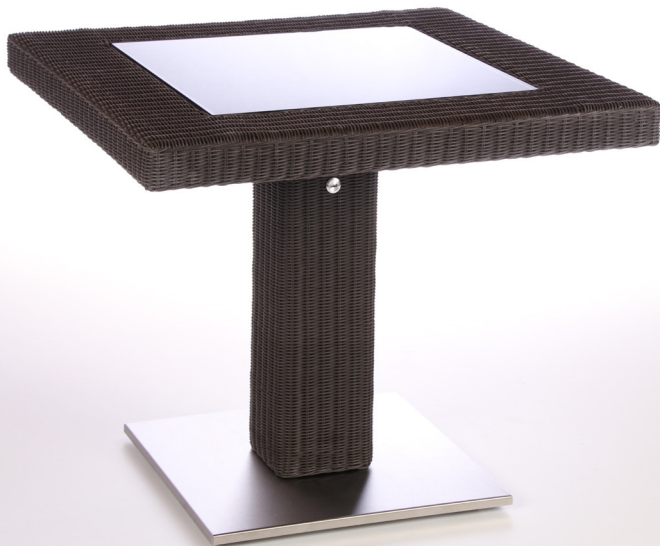
Dimensions: 76 x 90 x 90cm

Material: Synthetic Rattan

Color: DarkBrown Core

Persons: 4

Properties: Photovoltaic Glass 600x600mm  
Solar Glass Power: 21 Wpp  
2 USB Outlets (expandable)  
Bluetooth SmartConnect App  
Also available with CUCER LED light package  
for a stylish ambient lighting



*SunDinner*

Dining Table | Middle Leg

Restaurant | Café | Club Terrace | Rooftop Bar

> Stainless steel base plate

> flexibly combinable into larger arrangements

Dimensions: 76 x 90 x 90cm

Material: Synthetic Rattan

Color: DeepAmazon Core

Persons: 4

Properties: Photovoltaic Glass 600x600mm  
Solar Glass Power: 21 Wp  
2 USB Outlets (expandable)  
Bluetooth SmartConnect App  
Also available with CUCER LED light package  
for a stylish ambient lighting

We are happy to assist you in case of any questions are left unanswered or further information is required for your unique application.

**Cucer GmbH**

Hauptstrasse 31  
56477 Waigandshain

**Contact us**

Tel.: +49 2664 993 9 698  
info@cucer.eu

<b>CUCER PV GLASS</b> powered by Onyx Solar Energy	Thinfilm (a- Si) Size S 600 x 300 mm	Thinfilm (a- Si) Size M 600 x 600 mm	Thinfilm (a- Si) Size L 1200 x 300 mm
<b>Mechanical Data</b>			
Length	600 mm	600 mm	1200 mm
Width	300 mm	600 mm	300 mm
Weight	5 kg	10 kg	11 kg
<b>Electrical Data under Standard Test Conditions (STC)</b>			
Nominal Peak Power $P_{mpp}$	10 $W_p$	21 $W_p/Stck.$	12 $W_p/Stck.$
Open Circuit Voltage $V_{oc}$	23 v	47 v	23 v
Short Circuit Current $I_{sc}$	0,72 A	0,72 A	1,45 A
Voltage at nominal power $V_{mpp}$	16 v	32 v	16 v
Current at nominal power $I_{mpp}$	0,65 A	0,65 A	1,45 A
STC: 1000 W/m <sup>2</sup> , AM 1.5 at a cell-temperature of 25°C, stabilised module state			
<b>Junction Box</b>			
Protection	IP65	IP65	IP65
Wiring Section	2,5 / 4 mm <sup>2</sup>	2,5 / 4 mm <sup>2</sup>	2,5 / 4 mm <sup>2</sup>
<b>Limits</b>			
Maximum System Voltage	1000 v	1000 v	1000 v
Operating Module Temperature	-45...+85 °C	-45...+85 °C	-45...+85 °C
<b>Temperature-Coefficients</b>			
Temperature Coefficient of $P_{mpp}$	-0,19 %/°C	-0,19 %/°C	-0,19 %/°C
Temperature Coefficient of $V_{oc}$	-0,28 %/°C	-0,28 %/°C	-0,28 %/°C
Temperature Coefficient of $I_{sc}$	+0,09 %/°C	+0,09 %/°C	+0,09 %/°C

We are happy to assist you in case of any questions are left unanswered or further information is required for your unique application.

#### Cucer GmbH

Hauptstrasse 31  
56477 Waigandshain

#### Contact us

Tel.: +49 2664 993 9 698  
info@cucer.eu

CUCER BATTERIES	LiFePo Size S 3,3 Ah	LiFePo Size M 5,5 Ah	LiFePo Size L 11 Ah
<b>Mechanical Data</b>			
Dimension	82x64x95 mm	99x82x95 mm	142x85x147 mm
Weight	0,7 kg	1 kg	2,6 kg
<b>Electrical Data</b>			
Nominal Capacity	42,2 Wh 3,3 Ah	70,4 Wh 5,5 Ah	140,8 Wh 11 Ah
Open Circuit Voltage $V_{occ}$	13,7 V	13,7	13,7
Nominal Voltage $V_{mpp}$	12,8 V	12,8 V	12,8 V
Nominal Current $I_{mpp}$	150 A	150 A	150 A
Max Current $I_{peak}$	200 A@500ms	400 A@500ms	600 A@500ms
Max Current $I_{average}$	100 A@2000ms	200 A@2000ms	300 A@2000ms
Over Discharge Voltage	9,2 V@10s	9,2 V@10s	9,2 V@10s
Recovery Voltage	12 V	12 V	12 V
<b>Housing</b>			
Protection Class	IP65	IP65	IP65
<b>Limits</b>			
Operating Temperature Range	-30...+85 °C	-30...+85 °C	-30...+85 °C
Storage Temperature Range	-40...+100 °C	-40...+100 °C	-40...+100 °C

We are happy to assist you in case of any questions are left unanswered or further information is required for your unique application.

#### Cucer GmbH

Hauptstrasse 31  
56477 Waigandshain

#### Contact us

Tel.: +49 2664 993 9 698  
info@cucer.eu

CUCER SMART SOLAR Charging & Supply Station	Standard	XL
<b>Mechanical Data</b>		
Dimensions	160x120x42 mm	160x120x42 mm
Weight	0,7 kg	0,7 kg
<b>Electrical Data USB Outlets</b>		
Number of USB Outlets	2	4
Nominal Voltage	5,2 V	5,2 V
Nominal Current Strom per Outlet	2000 mA	2000 mA
<b>Electrical Data 12VDC Power-Supply</b>		
Outlets for LED Lighting	1	1
Nominal Voltage	12 V	12 V
Nominal Current	2000 mA	2000 mA
<b>Optional 12VDC Power Supply (i.E. for Notebook-Power Supply)</b>		
Nominal Voltage	n.v.	12 V
Nominal Current	n.v.	10 A
only when used with a certified power supply by the manufacturer of Notebook (i.E. 12V Car Charging Socket)		
<b>Electrical Data Charge Controller</b>		
Nominal Batterie Voltage	12 V	12 V
Rated Charge Current	10 A	10 A
Peak Efficiency	98 %	98 %
Charge Voltage ,absorption`	14,4 V (adjustable)	14,4 V (adjustable)
Charge Voltage ,float`	13,8 V (adjustable)	13,8 V (adjustable)
Charge Algorithm	multi-stage adaptive	multi-stage adaptive
Low voltage load disconnect	11,1 V (adjustable)	11,1 V (adjustable)
Low voltage load reconnect	13,1 V	13,1 V
<b>Housing</b>		
Protection	IP54	IP54
<b>Limits</b>		
Operating Temperature Range	-30...+60 °C	-30...+60 °C
Humidity	95 %	95 %

We are happy to assist you in case of any questions are left unanswered or further information is required for your unique application.

#### Cucer GmbH

Hauptstrasse 31  
56477 Waigandshain

#### Contact us

Tel.: +49 2664 993 9 698  
info@cucer.eu