

Relax On The Beach

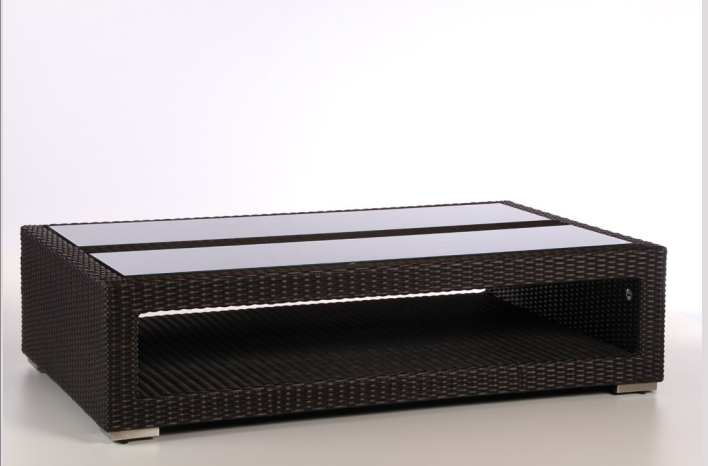
O-Shape XL

Lounge table to seating groups

Rooftop Bar | Lounge Area

- > compatible with other lounge tables
- > open to provide a shelf for handbags, clothes, towels etc.
- > our biggest

Dimensions: 33 x 130 x 80cm
Material: Synthetic Rattan
Color: DarkBrown Peel
Properties: Photovoltaic Glass 2x 1200x300mm
Solar Glass Power: 2x 21 Wp
4 USB-Outlets (expandable)
Bluetooth SmartConnect App
Also available with CUCER LED light package
for a stylish ambient lighting



Relax On The Beach

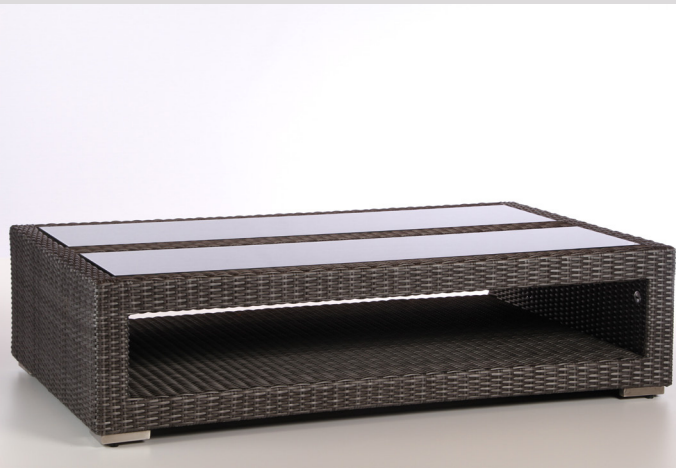
O-Shape XL

Lounge table to seating groups

Rooftop Bar | Lounge Area

- > compatible with other lounge tables
- > open to provide a shelf for handbags, clothes, towels etc.
- > our biggest

Dimensions: 33 x 130 x 80cm
Material: Synthetic Rattan
Color: SilverMetalic Peel
Properties: Photovoltaic Glass 2x 1200x300mm
Solar Glass Power: 2x 21 Wp
4 USB-Outlets (expandable)
Bluetooth SmartConnect App
Also available with CUCER LED light package
for a stylish ambient lighting



We are happy to assist you in case of any questions are left unanswered or further information is required for your unique application.

Cucer GmbH

Hauptstrasse 31
56477 Waigandshain

Contact us

Tel.: +49 2664 993 9 698
info@cucer.eu

CUCER PV GLASS powered by Onyx Solar Energy	Thinfilm (a- Si) Size S 600 x 300 mm	Thinfilm (a- Si) Size M 600 x 600 mm	Thinfilm (a- Si) Size L 1200 x 300 mm
Mechanical Data			
Length	600 mm	600 mm	1200 mm
Width	300 mm	600 mm	300 mm
Weight	5 kg	10 kg	11 kg
Electrical Data under Standard Test Conditions (STC)			
Nominal Peak Power P_{mpp}	10 W_p	21 $W_p/Stck.$	12 $W_p/Stck.$
Open Circuit Voltage V_{oc}	23 v	47 v	23 v
Short Circuit Current I_{sc}	0,72 A	0,72 A	1,45 A
Voltage at nominal power V_{mpp}	16 v	32 v	16 v
Current at nominal power I_{mpp}	0,65 A	0,65 A	1,45 A
STC: 1000 W/m ² , AM 1.5 at a cell-temperature of 25°C, stabilised module state			
Junction Box			
Protection	IP65	IP65	IP65
Wiring Section	2,5 / 4 mm ²	2,5 / 4 mm ²	2,5 / 4 mm ²
Limits			
Maximum System Voltage	1000 v	1000 v	1000 v
Operating Module Temperature	-45...+85 °C	-45...+85 °C	-45...+85 °C
Temperature-Coefficients			
Temperature Coefficient of P_{mpp}	-0,19 %/°C	-0,19 %/°C	-0,19 %/°C
Temperature Coefficient of V_{oc}	-0,28 %/°C	-0,28 %/°C	-0,28 %/°C
Temperature Coefficient of I_{sc}	+0,09 %/°C	+0,09 %/°C	+0,09 %/°C

We are happy to assist you in case of any questions are left unanswered or further information is required for your unique application.

Cucer GmbH

Hauptstrasse 31
56477 Waigandshain

Contact us

Tel.: +49 2664 993 9 698
info@cucer.eu

CUCER BATTERIES	LiFePo Size S 3,3 Ah	LiFePo Size M 5,5 Ah	LiFePo Size L 11 Ah
Mechanical Data			
Dimension	82x64x95 mm	99x82x95 mm	142x85x147 mm
Weight	0,7 kg	1 kg	2,6 kg
Electrical Data			
Nominal Capacity	42,2 Wh 3,3 Ah	70,4 Wh 5,5 Ah	140,8 Wh 11 Ah
Open Circuit Voltage V_{occ}	13,7 V	13,7	13,7
Nominal Voltage V_{mpp}	12,8 V	12,8 V	12,8 V
Nominal Current I_{mpp}	150 A	150 A	150 A
Max Current I_{peak}	200 A@500ms	400 A@500ms	600 A@500ms
Max Current $I_{average}$	100 A@2000ms	200 A@2000ms	300 A@2000ms
Over Discharge Voltage	9,2 V@10s	9,2 V@10s	9,2 V@10s
Recovery Voltage	12 V	12 V	12 V
Housing			
Protection Class	IP65	IP65	IP65
Limits			
Operating Temperature Range	-30...+85 °C	-30...+85 °C	-30...+85 °C
Storage Temperature Range	-40...+100 °C	-40...+100 °C	-40...+100 °C

We are happy to assist you in case of any questions are left unanswered or further information is required for your unique application.

Cucer GmbH

Hauptstrasse 31
56477 Waigandshain

Contact us

Tel.: +49 2664 993 9 698
info@cucer.eu

CUCER SMART SOLAR Charging & Supply Station	Standard	XL
Mechanical Data		
Dimensions	160x120x42 mm	160x120x42 mm
Weight	0,7 kg	0,7 kg
Electrical Data USB Outlets		
Number of USB Outlets	2	4
Nominal Voltage	5,2 V	5,2 V
Nominal Current Strom per Outlet	2000 mA	2000 mA
Electrical Data 12VDC Power-Supply		
Outlets for LED Lighting	1	1
Nominal Voltage	12 V	12 V
Nominal Current	2000 mA	2000 mA
Optional 12VDC Power Supply (i.E. for Notebook-Power Supply)		
Nominal Voltage	n.v.	12 V
Nominal Current	n.v.	10 A
only when used with a certified power supply by the manufacturer of Notebook (i.E. 12V Car Charging Socket)		
Electrical Data Charge Controller		
Nominal Batterie Voltage	12 V	12 V
Rated Charge Current	10 A	10 A
Peak Efficiency	98 %	98 %
Charge Voltage ,absorption`	14,4 V (adjustable)	14,4 V (adjustable)
Charge Voltage ,float`	13,8 V (adjustable)	13,8 V (adjustable)
Charge Algorithm	multi-stage adaptive	multi-stage adaptive
Low voltage load disconnect	11,1 V (adjustable)	11,1 V (adjustable)
Low voltage load reconnect	13,1 V	13,1 V
Housing		
Protection	IP54	IP54
Limits		
Operating Temperature Range	-30...+60 °C	-30...+60 °C
Humidity	95 %	95 %

We are happy to assist you in case of any questions are left unanswered or further information is required for your unique application.

Cucer GmbH

Hauptstrasse 31
56477 Waigandshain

Contact us

Tel.: +49 2664 993 9 698
info@cucer.eu